

# SmartWall® Service Portal

## DDoS Protection as-a-Service

Internet service and hosting providers are often unwilling accomplices to DDoS attacks that transit or terminate on their networks. Providers and their customers are inseparably linked by the challenges DDoS attacks present.

To avoid damage to reputation and brand, customers are looking for DDoS protection that has been designed to meet the changing threat landscape. For providers, SmartWall® offers a golden opportunity to modernize their DDoS protection—gaining a valuable new service revenue opportunity in the process.



### A Value-Add Service Revenue Model

DDoS Protection as a Service (DDPaaS) is an additional revenue stream for hosting and service providers that enables them to economically provide customers and tenants with comprehensive, industry-leading, real-time DDoS attack protection and reporting, at an affordable price.



**Create a differentiated offering to more easily retain existing customers and attract new ones**



**Deliver an enhanced service with automatically protected infrastructure, which eliminates the service outages and latency issues that result from DDoS attacks**



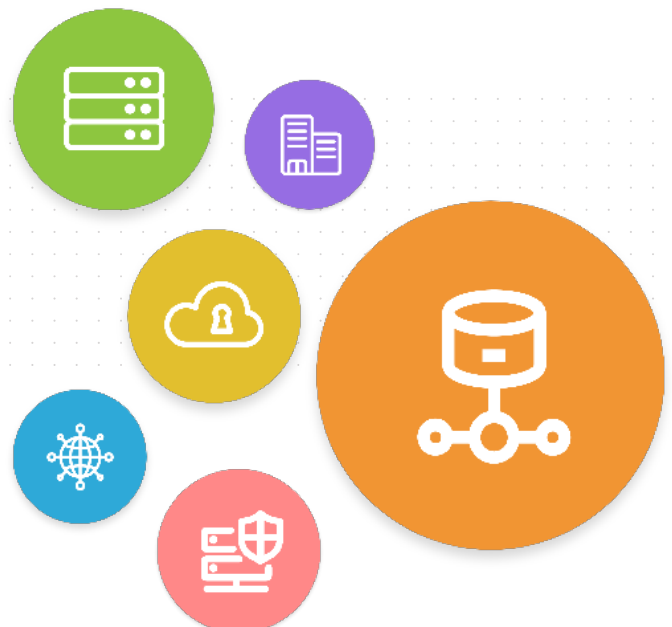
**Generate incremental revenue with a premium DDPaaS offering providing attack visibility for protected customers and a rapid ROI on deployment and operating costs**

## Proactive DDoS Protection

Corero provides market-leading innovative DDoS protection solutions. Our SmartWall family of solutions delivers real-time mitigation of attacks in seconds, rather than the minutes taken by legacy solutions, to ensure good user traffic can remain flowing uninterrupted.

With flexible deployment topologies, (In-line appliances, Infrastructure-based, in the Cloud, or scrubbing centers) the SmartWall family delivers DDoS protection which automatically, and surgically removes DDoS attack traffic.

Protection is offered in cost effective increments, scaling to Tens-of-Terabits, to support growing bandwidth requirements. The SmartWall solutions are the highest performing in the industry, while providing the most robust security coverage at unprecedented scale, with the lowest total cost of ownership to the customer.





*Tier 2 and Tier 3 Service Providers and Hosting Providers now have access to DDoS protection at the price and performance that makes sense to their business, whereas five years ago, this wasn't a possibility. Traditional DDoS solutions historically have not given way to enabling additional service offerings that service providers could use to generate incremental revenue. This combination now provides a game changing opportunity for the service provider community.*

**Jeff Wilson**

Senior Research Director and Advisor, IHS

## Proactive DDoS Protection

The SmartWall Service Portal enables TDS & TDD deployments to deliver per customer visibility and administration



Automated DDoS attack reporting and service alerting



DDoS attack monitoring dashboards globally, and per customer

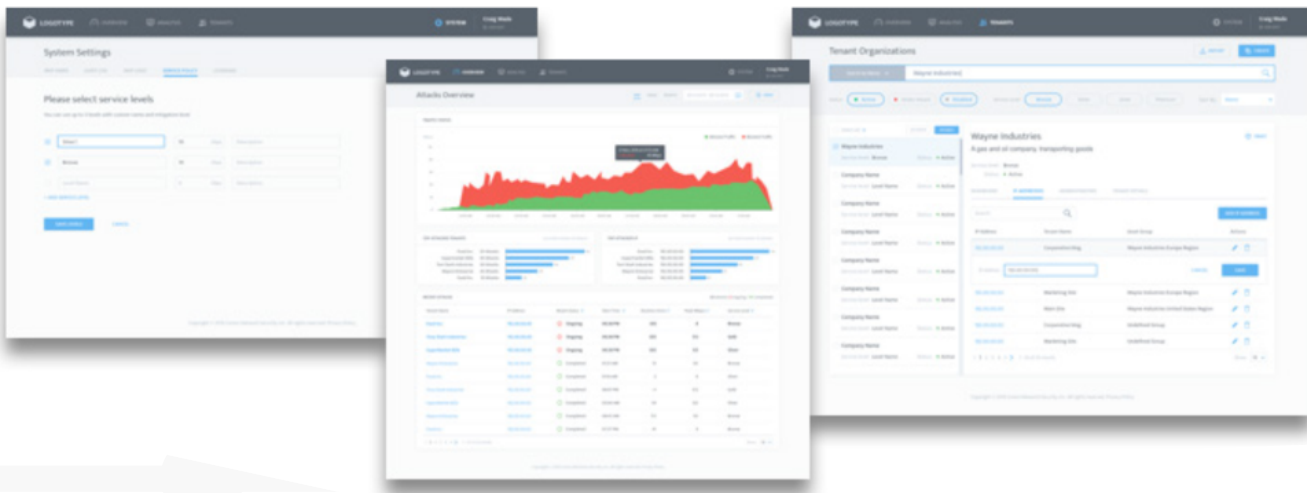


Role-based access for provider and customers



Customer life-cycle management functions

This web application portal enables providers to onboard customers, assign DDoS protection service levels and view attack dashboards for each. Protected customers can login to their own view, to access DDoS attack reporting and dashboards, and understand the value of the DDoS protection they are receiving.



With a SmartWall TDS or TDD solution enhanced with the SmartWall Service Portal capabilities, providers can effectively protect their network from DDoS attacks, eliminating service outages and bandwidth loss due to attacks, and achieve ROI from their DDoS mitigation investment in as little as just a few months\*.

\* ROI varies depending on protection service pricing models made available to provider's customers.



# Key Service Benefits



## Simple Lifecycle Management

Easily onboard, update, set the service level for, and remove tenants from the system. Configure automatic alerts to enable proactive management of the service, increasing sign-ups of unsubscribed tenants, or upselling existing tenants to a more comprehensive service.



## Per Tenant Visibility

Simple dashboards enable providers and their tenants to easily monitor and understand how often they are being attacked, how big those attacks are, and the value they are receiving from the service.



## Automated Reporting

Email reports to every tenant, on a regular cadence, automatically informing them of the benefit they are receiving from the DDoS protection service.



## Easy Integration

As well as enabling a comprehensive standalone solution for multi-tenant service enablement, a built-in programmatic interface ensures simple, but powerful, integration with existing customer life-cycle management and reporting tools.

## Technical Specifications

### Management

#### Web-Based GUI

HTTPS Access through portal login page

#### Programmatic API

JSON-Based REST

#### Secure Authentication

Role-based access via LDAP

### Physical Environment

#### Hypervisors

KVM running on Redhat Enterprise 7+, CentOS 7+ or Ubuntu 16.04+, VMware ESXi 6.5+

#### Minimum Requirements

8GB Memory, 400GB Disk

#### System Capacity

10,000 Tenants

[www.corero.com](http://www.corero.com)

#### US Headquarters

293 Boston Post Road  
West Suite 310  
Marlborough, MA 01752  
Tel: +1 978 212 1500  
Email: [info@corero.com](mailto:info@corero.com)

#### EMEA Headquarters

Regus House, Highbridge,  
Oxford Road Uxbridge,  
England UB8 1HR, UK Tel:  
+44 (0) 1895 876579  
Email: [info\\_uk@corero.com](mailto:info_uk@corero.com)

#### Scotland Office

53 Hanover Rd  
Edinburgh EH2 2PJ, UK  
Email: [info\\_uk@corero.com](mailto:info_uk@corero.com)